

UPS WorldShip™



Transferring FedEx Ship Manager® Commodity List to UPS WorldShip

Transferring FedEx Ship Manager® Commodity List to UPS WorldShip

1. Launch **FedEx Ship Manager**.
2. In menu bar select the following: **Databases > Templates**.
3. Click **Add** in the *View Templates* window.
4. Enter the following in the *Enter Template Information* section.
 - a. Enter **COMMODITIES** as the Template ID.
 - b. Select **Commodity** as the Database.
 - c. Enter **c:\fedexcommodity.csv** as the file name.

NOTE: The file name is case sensitive and *must match exactly* or the import into UPS WorldShip will fail.
5. Select and Check the following in the *Format* section.
 - a. Select **Delimited** as the file format.
 - b. Check **Column headers on 1st line**.
6. Click on **Add all >>** under the **Fields** section.
7. Click on **OK**.
8. Click **OK** in the *View Templates* window.
9. In the format section select the following:
Databases > File Maintenance > Export.
10. Select **COMMODITIES** from the *Template name:* drop down menu, and then click **OK**.

NOTE: Verify the output file name is **c:\fedexcommodity.csv**.
11. Click **OK** in the *File Maintenance Export* message window.

Transferring FedEx Ship Manager® Commodity List to UPS WorldShip



12. Move **fedexcommodity.csv** to **C:\UPS\WSTD\ImpExp\Invalid**.

NOTE:

- C:\ is the default drive letter UPS WorldShip is installed on. Change the drive letter accordingly if it was installed on a different drive letter.
- If UPS WorldShip was installed as a LAN Admin/Remote, the path will include the shared folder name.
C:\<SharedFolder>\UPS\WSTD\ImpExp\Invalid.

13. Download the following files from the UPS website under **FedEx Ship Manager Commodity List Transfer** section:
<http://www.ups.com/content/us/en/resources/techsupport/worldship/transfer.html>.

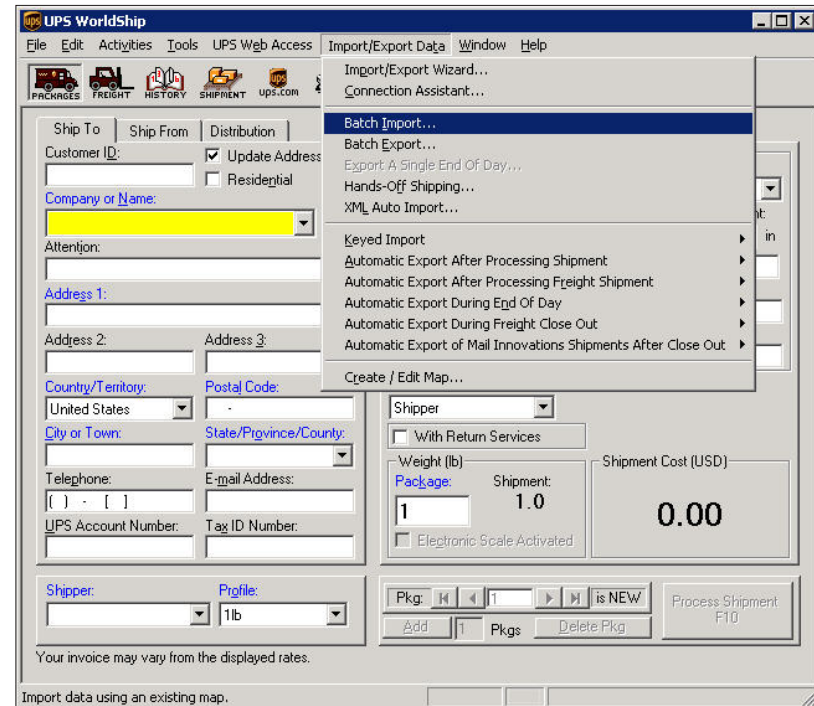
- **FedExCommodity.dat**
Save to **C:\UPS\WSTD\ImpExp\Commod.**
- **InvImp.bin**
Save to **C:\UPS\WSTD\ImpExp\Commod.**
- **InvExp.bin**
Save to **C:\UPS\WSTD\ImpExp\Commod.**
- **schema.ini**
Save to **C:\UPS\WSTD\ImpExp\Invalid.**

FedEx Ship Manager® Commodity List Transfer			
Download Transfer Guides			
File Name	File Format	Date Created	Download
Guide to Transfer FedEx Ship Manager Commodity List to UPS WorldShip		10/16/2009	Download
FedExCommodity.dat		03/12/2009	Download
InvImp.bin		03/12/2009	Download
InvExp.bin		03/12/2009	Download
schema.ini		03/12/2009	Download

Transferring FedEx Ship Manager® Commodity List to UPS WorldShip

14. Launch **UPS WorldShip**.

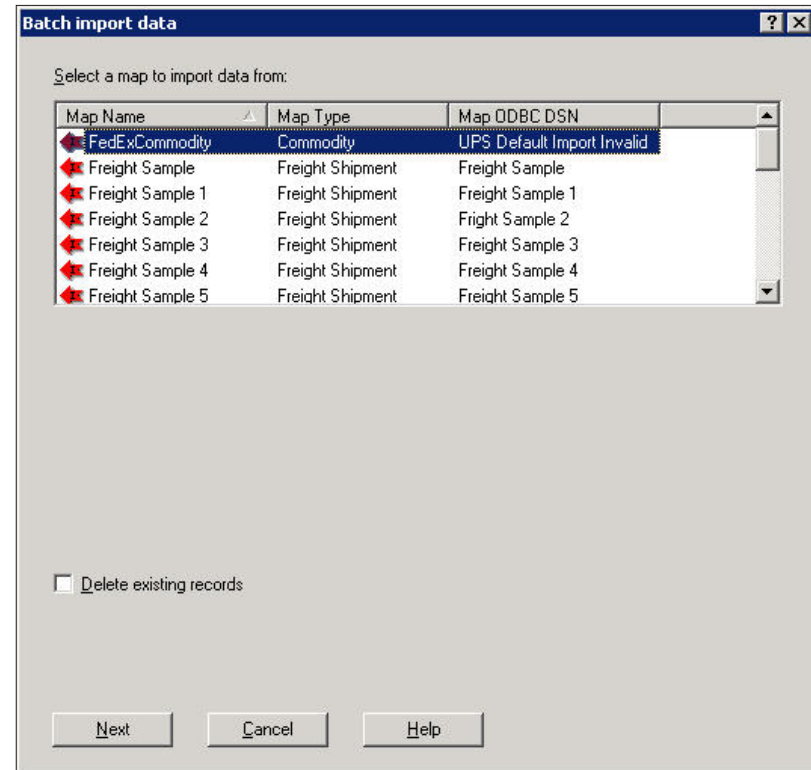
15. In the menu bar select the following:
Import/Export Data > Batch Import.



Transferring FedEx Ship Manager® Commodity List to UPS WorldShip

16. In the *Batch import data* window highlight the Map Name — **FedExCommodity**.

17. Click **Next**.



Transferring FedEx Ship Manager® Commodity List to UPS WorldShip

18. Click **Next** in the *Import/Export Preview* window.

19. Click **Save** when the import is complete in the *Import/Export Summary* window.

NOTE:

- Invalid records are saved to **C:\UPS\WSTD\ImpExp\Invalid\ComInv.csv**.
- Records can be modified from this file and re-imported using the following Map Name — **{ Default Import Invalid Records }**
Map Type — **Commodity**.

